

Παρατήρηση εδάφους

Χρησιμοποιήστε το φύλλο δεδομένων «Παρατήρηση εδάφους» (P18b) για να προσδιορίσετε τις ιδιότητες του εδάφους. Εισαγάγετε τα αποτελέσματά σας στον παρακάτω πίνακα.

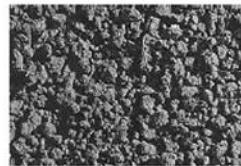
	Περιγραφή ιδιοτήτων
Χρώμα	
Δομή	
Συνοχή	
Υφή	
Χαλίκι	
Ρίζες	

Φύλλο δεδομένων «Παρατήρηση εδάφους»

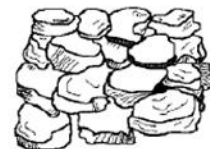
Δομή

Είναι το έδαφος...

Coarse (grainy): resembles crumbs of cookies and is usually less than 5 mm in diameter. Is often found in horizons near the surface where roots grow



Blocky (lumpy): Irregular blocks, usually 15-50 mm in diameter.



Prismatic: Vertical soil columns (clearly visible in the horizon), which can be a several centimeters long. Usually found in lower horizons.



Column-shaped: Vertical columns with a white rounded "cap" at the top. To be found in soils in arid climate.

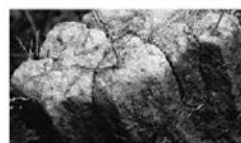
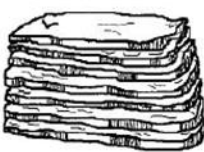


Plate-like: Thin, flat, horizontal soil sheets. Found in compacted soils.

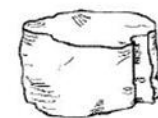


Sometimes, soil samples do not have a visible structure. These are divided into the following two types:

Single-grained: The soil is broken up into individual particles that do not adhere to each other. The sample therefore always has a loose consistency. Is usually found in sandy soils.



Solid (compact): The soil has no visible structure, is almost impossible to break up and shows itself in large chunks.



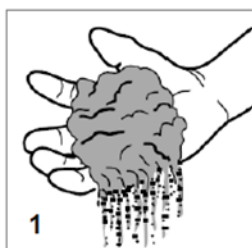
Χρώμα

Είναι το έδαφος...

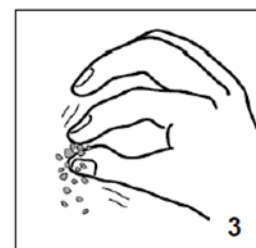


Συνοχή

Είναι το έδαφος...

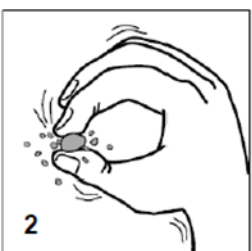


1. Loose: It is difficult to take out a crumb and the structure falls apart before you start to work. Note: Single grain soils always have a loose consistency.

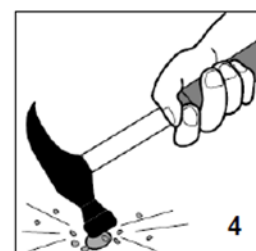


2. Crumbly: The soil crumb disintegrates even at low pressure.

3. Firm: The crumb only disintegrates under pressure, so the crumb leaves an imprint in your fingers.

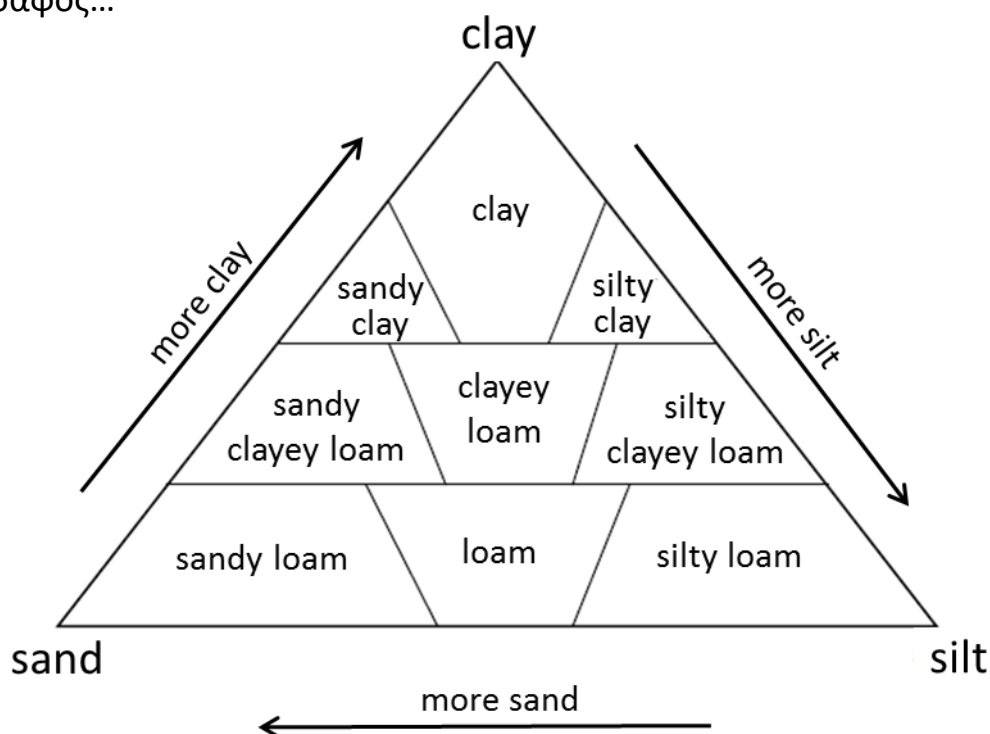


4. Very firm: the crumb cannot be crushed with the fingers, you need a hammer for this.



Υφή

Είναι το έδαφος...



many



This material is included with kind permission of
GLOBE Switzerland. English translation by PULCHRA.